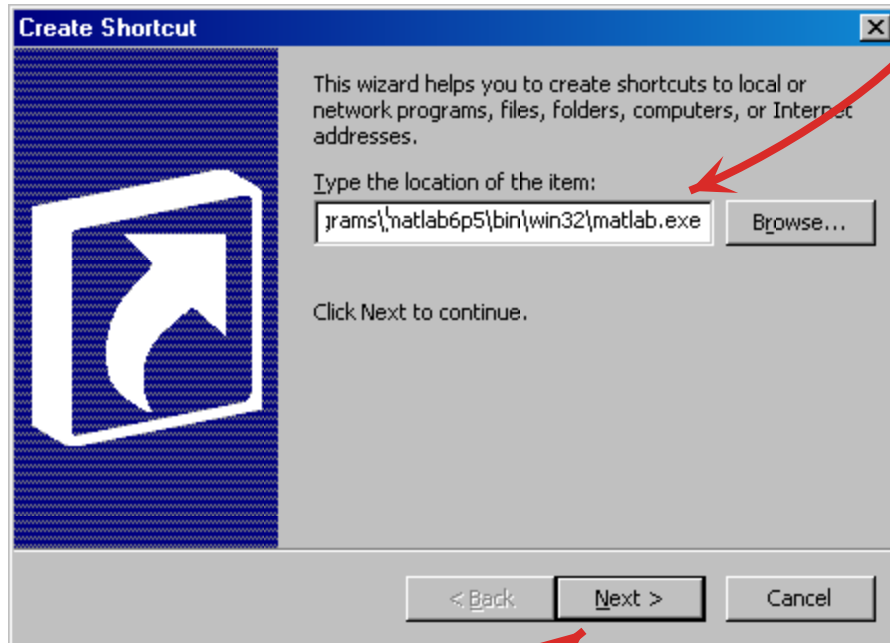


## Creating a Shortcut to MATLAB (Windows/XP screen shots) page 1/2

1. Move cursor to the desktop, then click on the right mouse button.
2. Select "New" >> "Shortcut"
3. Enter "P:\Programs\matlab6p5\bin\win32\matlab.exe" for "location of the item"



4. Click "Next >"
5. Change the name of the shortcut (If you wish)
6. Click Finish

