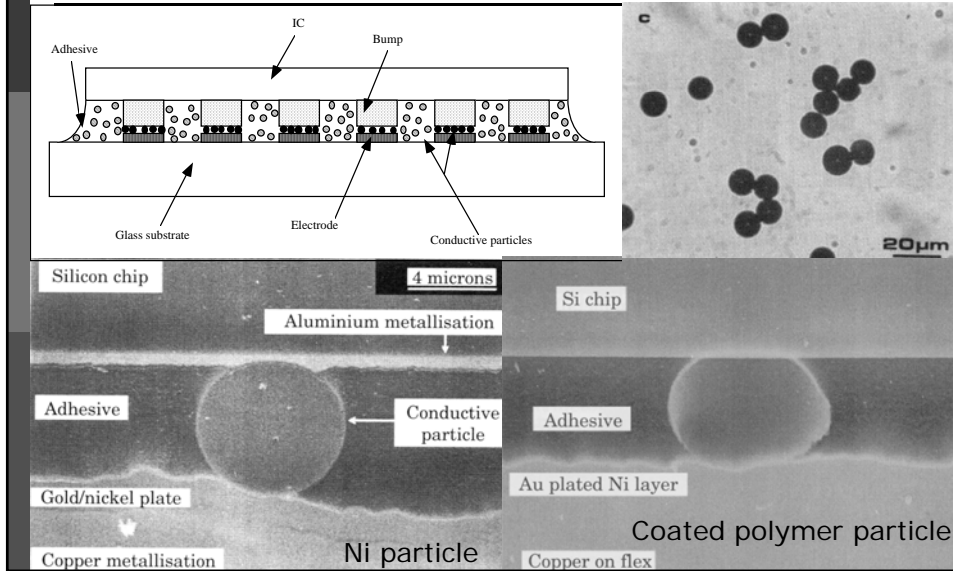


# ACA: Anisotropic Conductive Adhesive



# Anisotropic Conductive Film (ACF) or Z-Axis Film (ZAF)

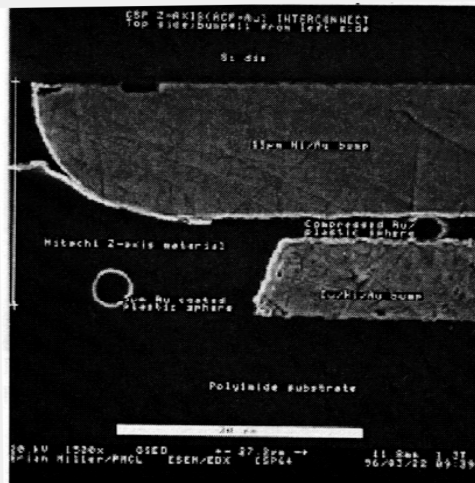


Figure 9: A typical ACF bonding cross-sectioned plated polymer particle filled ACF film

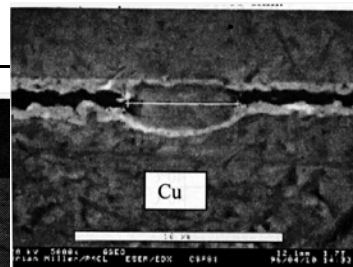


Figure 10: Ni filled ACF bonding with deformed Cu trace and Ni particle.

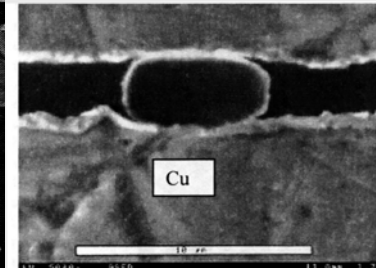


Figure 11: Close-up view of a deformed Au coated DVB-PS polymer particle in ACF film after bonding.