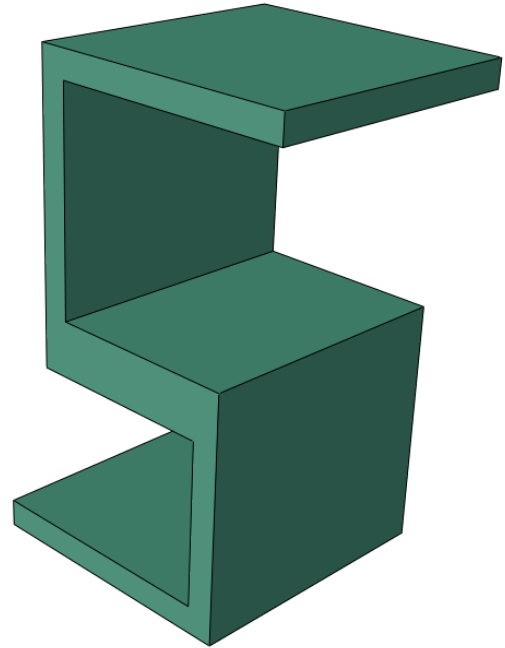


- 1) An s-shaped block is used as a pressure sensor. Pressure of 300 psi is applied to the top surface while the bottom is fixed. Determine the maximum vertical deflection and vonMises stress and their locations. Use Aluminum as the material.

CAE Model dimension in inches



- 2) The cast iron machine tool jig in the figure has side slots for locking pins. Load of 300 N/mm is applied to the edge AB . The other face (shown as CDE) is fixed. Find the maximum vonMises stress and its location, and maximum displacement.

CAE model dimensions in mm

