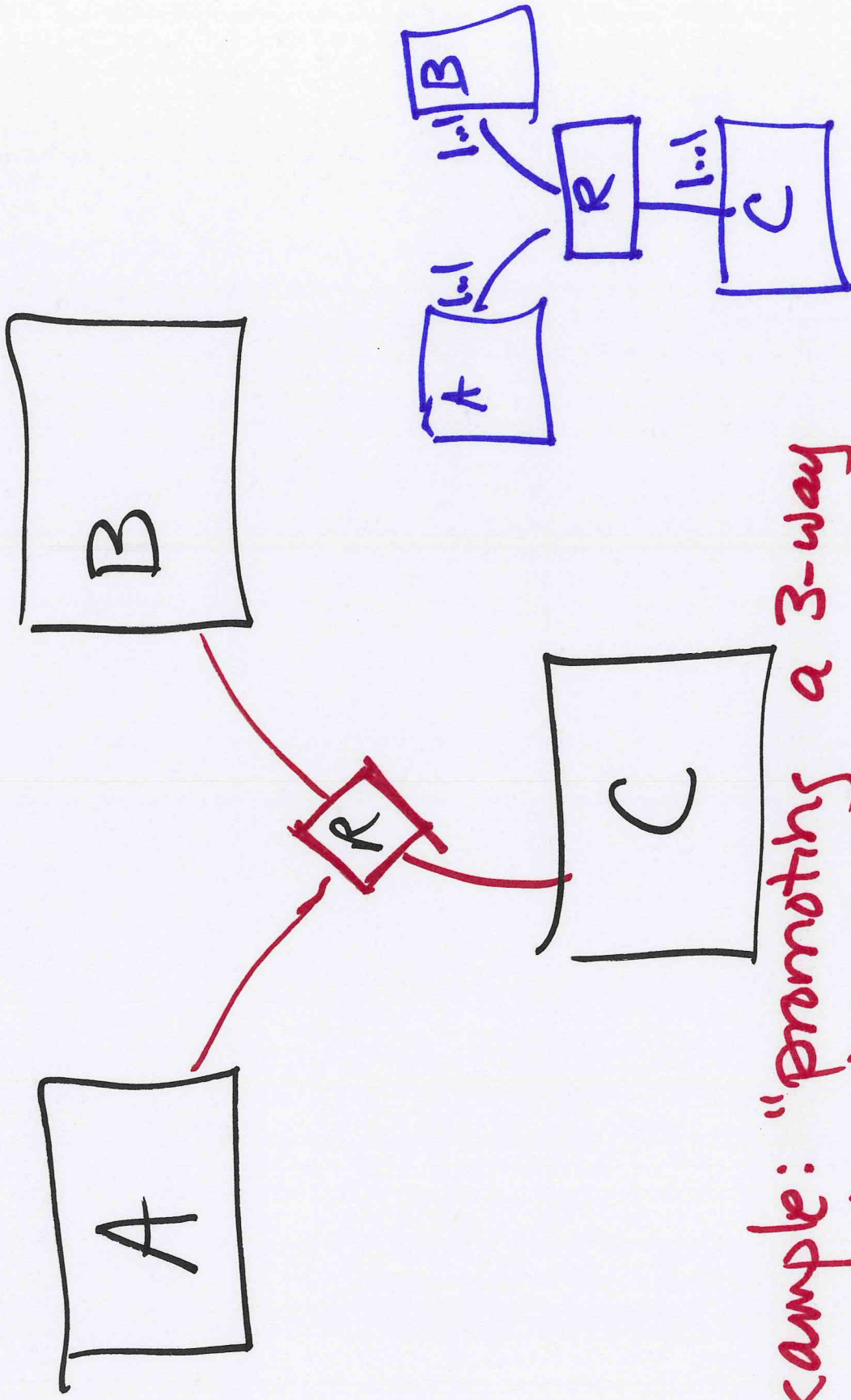


386/586 Wed. Feb. 13, 2013

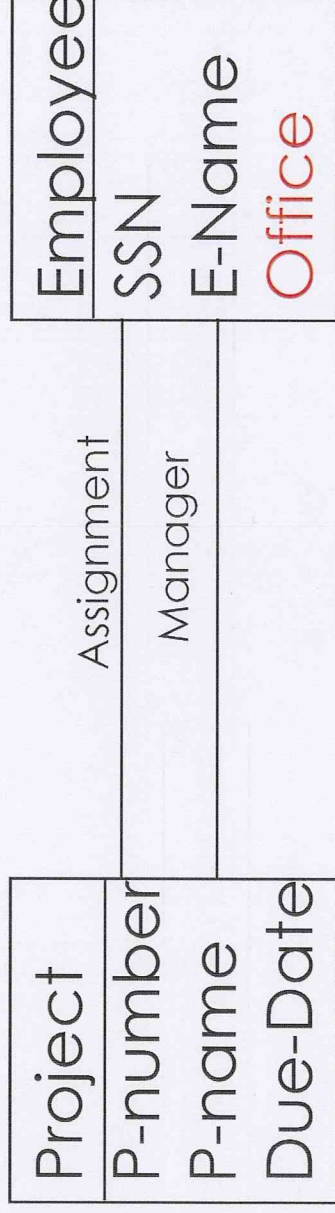
Announcements

- assignment 5 is posted
- test 1 is next week
Wed. 5:30-7:30
lecture at 7:40
- demo session 6 moved
to week 9 (from week 8)
- grad student topic/team
selection by next Wednesday.



Example: "Promoting a 3-way relationship to be an entity."
(you can always do this, if you want.)

Duality: entity ↔ value
and attribute ↔ relationship



Should Office be an attribute of Employee? or a separate entity set? Most attributes can be “promoted” to an entity set and some entities can be “demoted” to an attribute value. explained in book
This explains why there are so many different ways to design a schema.

Student(id, name, SpA, address)



Student1(id, name)

Student2(id, SpA, address)

609

Converting ER to Relational Schema

